



PARTNERS UPDATE

Michelle Franks
Partnership Manager



About us

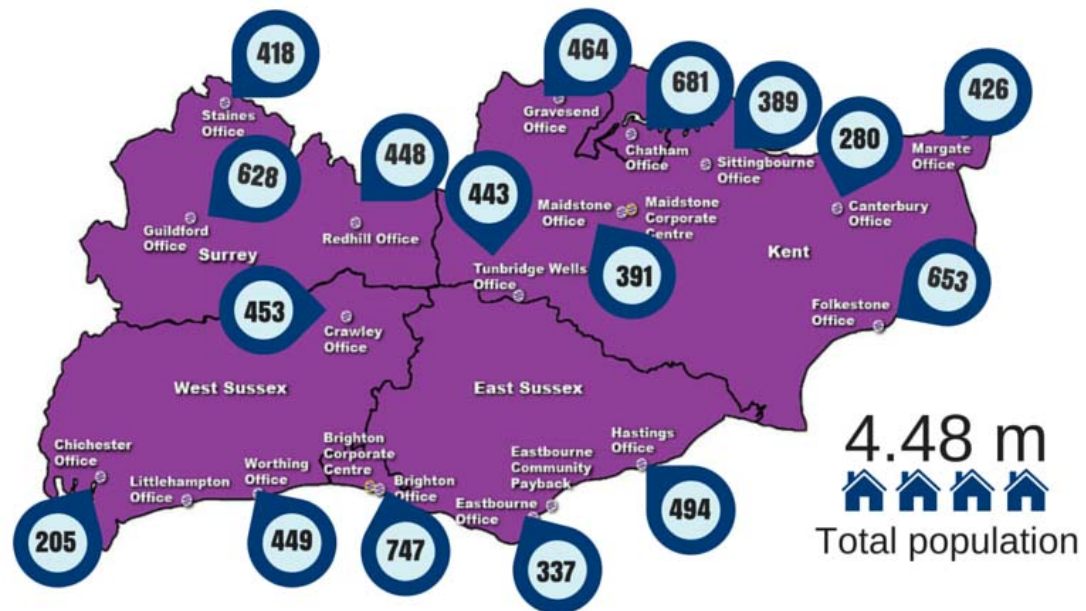
OUR CASELOAD

 **7,906**
cases



3,727
Kent

2,685
Sussex

1,494
Surrey



17 offices
 providing direct services

10 prisons
 3 X 



OUR VISION

We deliver rehabilitation services that help people who have committed crimes to help themselves; so they can aspire, achieve and make sustainable changes to their lives.

OUR PURPOSE

We are here to reduce reoffending and help keep safe the communities in which we operate.

OUR GOAL

We believe a person can stop reoffending if they accept responsibility for their actions and the support we offer to make change happen

OUR APPROACH

My Solution Rehabilitation Programme puts the person at the heart of their own rehabilitation: 'my problem, my solution'.

OUR PHILOSOPHY

Each time we meet with a service user, they are one step closer to a crime-free life.

Executive team



Suki Binning
Chief Executive



Graham Wines
Head of HR



Director of Rehab,
Resettlement,
Assessment and
IOM (Vacant)



Cynthia Allen
Director of
Interventions

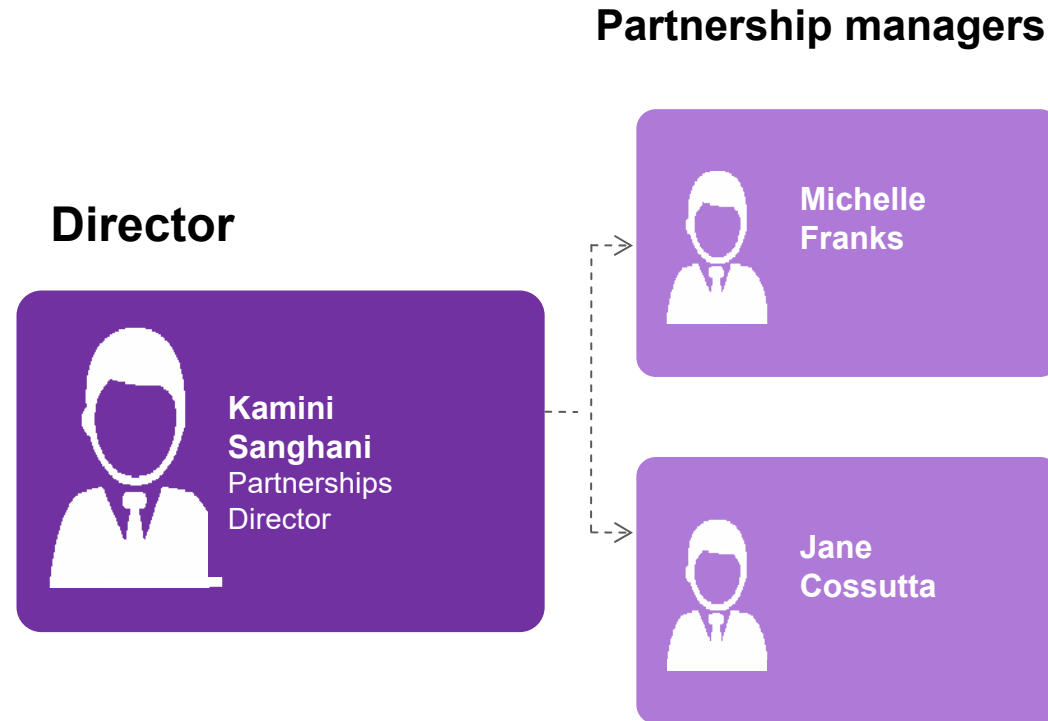


Kamini Sanghani
Director of
Partnerships



Andrew Phipps
Head of Contracts

Partnerships team



Our journey

Feb

Seetec takes ownership of KSS CRC

We begin to implement a new operating model – My Solution Rehabilitation Programme.



March

Staff restructure into three teams

Resettlement, Rehabilitation and Assessment teams will support our new operating model.



May

Through the Gate work begins

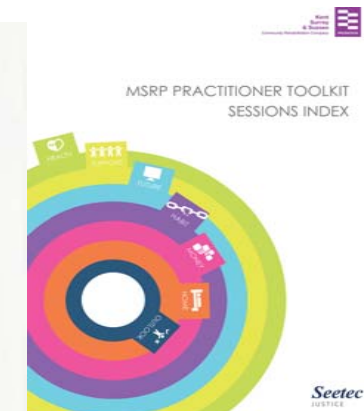
Resettlement staff work with prisoners to help them prepare for release.



June

Staff deliver MSRP interventions

Staff deliver MSRP interventions from our Practitioner Toolkit to help service users acquire the understanding and skills to be crime-free.



Next steps

In progress

IOM hubs

IOM hubs will be in place across KSS bringing together a dedicated team of police and KSS CRC staff at one site, to help share and act on intelligence to reduce reoffending.



April

New IT infrastructure

Our new IT infrastructure will be rolled out and tested by staff. It will go 'live' when NOMS are ready to switch over to the new secure gateway.



June-
July

New estates

We'll start moving to new premises where our current estates are not fit for purpose or our contract at the site will end. Our new estates will have an open plan feel to improve service user engagement.



July-
August

Innovation IT solution is in place

M-SAT our new assessment tool will help practitioners schedule the right interventions at the right time; MySIS will give us the information we need to work efficiently and the evidence to demonstrate what works to reduce reoffending.



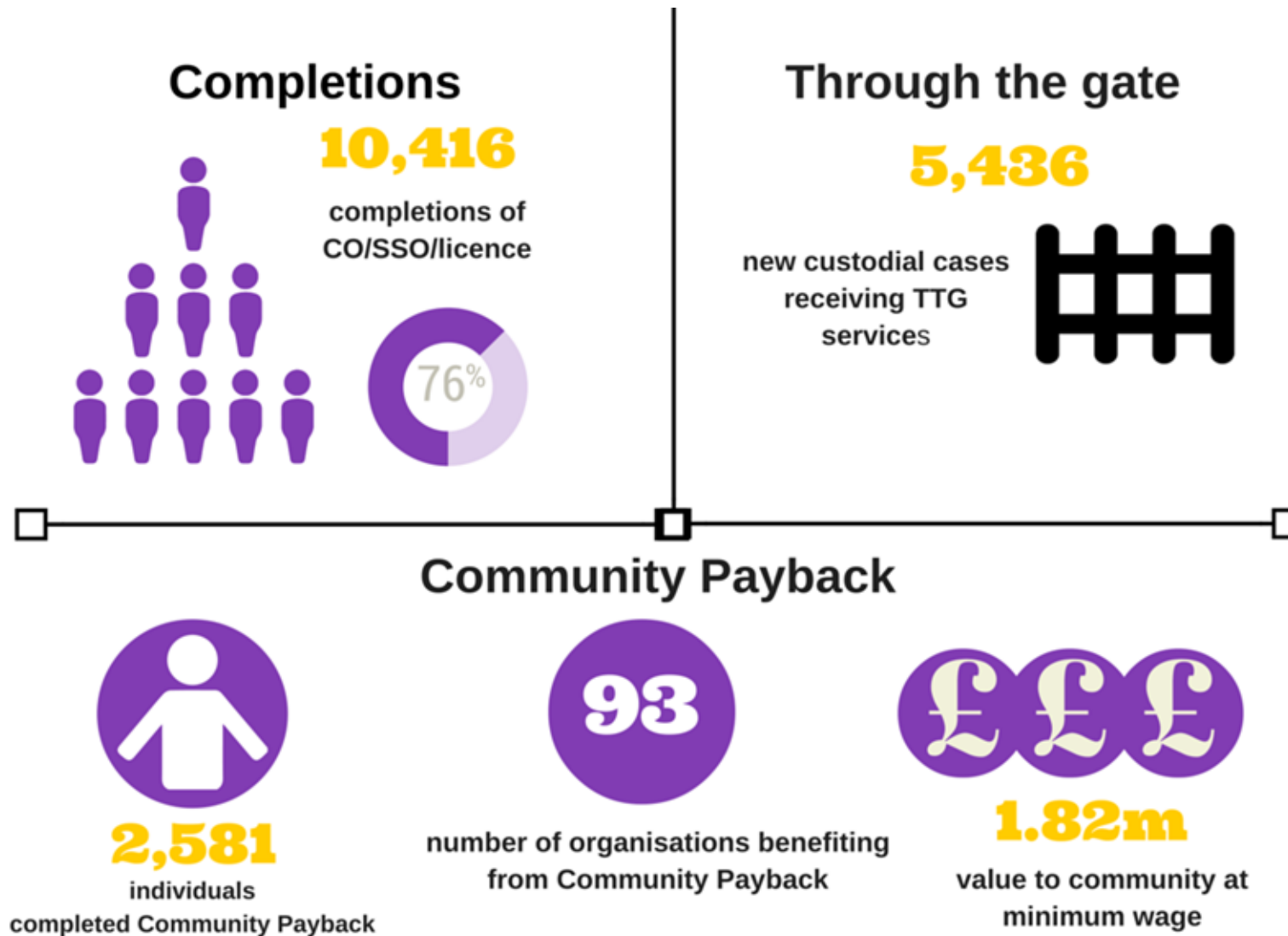
Our performance 15/16

13

13 of 14 baseline targets set by MoJ are being exceeded at end of December 2015

The purpose of these incremental targets is to help monitor our progress against end targets the MoJ will begin to measure from February 2017.

Performance since share sale



Data based on 1 February 2015 – 30 January 2016

Kent, Surrey and Sussex CRC

Brighton Corporate Centre, 4th Floor, Invicta House, Trafalgar Place, Brighton BN1 4FR | 01273 627800 | ksscrc.co.uk